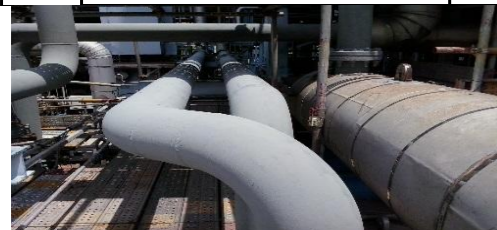


OUR EXPERIENCES

| SN | Service Range | Client | Type of Work | Work Description | Location of Job | Year | Done By |
|-----|------------------------------------|--|-------------------------|---|----------------------|------|---------|
| 304 | -Oil, Gas & Petrochemical Industry | DIALOG PLANT SERVICES | INSULATION | PROJECT : Insulation works at PDT2 CO Line in Pengerang | PENGERANG (JOHOR) | 2018 | LKM |
| 303 | -Oil, Gas & Petrochemical Industry | HQC ENGINEERING | SCAFFOLDING | Scaffolding works for Package 28A | RAPID (JOHOR) | 2018 | LKM |
| 302 | -Oil, Gas & Petrochemical Industry | HQC ENGINEERING | SCAFFOLDING | Scaffolding works for Package 14 (Pipe rack) | RAPID (JOHOR) | 2018 | LKM |
| 301 | -Oil, Gas & Petrochemical Industry | MSL HARVEST & ENGINEERING | SCAFFOLDING | Contracting Scaffolding works for Rapid 2018 | RAPID (JOHOR) | 2018 | LKM |
| 300 | -Manufacturing Industry | SEAGATE | PAINTING, SCAFFOLDING | Painting & Scaffolding work at Basement Floor Plan of Stair 9 Area | SENAI (JOHOR) | 2018 | LKM |
| 299 | -Manufacturing Industry | SEAGATE | PAINTING, SCAFFOLDING | Painting & Scaffolding work for Cooling Tower 8A & 8B | SENAI (JOHOR) | 2018 | LKM |
| 298 | -Oil, Gas & Petrochemical Industry | SYNTHOMER | INSULATION | PROJECT : Insulation SDM June 2018 | PASIR GUDANG (JOHOR) | 2018 | LKM |
| 297 | -Oil, Gas & Petrochemical Industry | HARVEST ENGINEERING | SCAFFOLDING | Scaffolding works for Siemen | RAPID (JOHOR) | 2017 | LKM |
| 296 | -Manufacturing Industry | SEAGATE | INSULATION, SCAFFOLDING | Removal and Installtion of New Cladding Work and Scaffolding Work | SENAI (JOHOR) | 2017 | LKM |
| 295 | -Oil, Gas & Petrochemical Industry | PETROVIETNAM ENGINEERING | SCAFFOLDING | Scaffolding works for Package 11 (substation) | RAPID (JOHOR) | 2017 | LKM |
| 294 | -Oil, Gas & Petrochemical Industry | PETROCHEMICALS | INSULATION | Hot Insulation Work for P660 Spare Pump | PASIR GUDANG (JOHOR) | 2017 | LKM |
| 293 | -Oil, Gas & Petrochemical Industry | LOTTE CHEMICAL (SPARK ENGINEERING) | SCAFFOLDING | Scaffolding Services for Lotte 2017 | PASIR GUDANG (JOHOR) | 2017 | LKM |
| 292 | -Power Plant | SYARIKAT AIR JOHOR (PRO EM INDUSTRIAL) | PAINTING, SCAFFOLDING | Painting and Scaffolding work for SAJ Semanyir Area | ENDAU (JOHOR) | 2017 | LKM |
| 291 | -Power Plant | SYARIKAT AIR JOHOR (PRO EM INDUSTRIAL) | PAINTING, SCAFFOLDING | Painting and Scaffolding work for SAJ Skudai Area | SKUDAI (JOHOR) | 2017 | LKM |
| 290 | -Food & Beverage Industry | KERRY INGREDIENTS (CHE TEAM WORKS) | INSULATION, SCAFFOLDING | Insulation Installation and Scaffolding work at Kerry Plentong | PLENTONG (JOHOR) | 2017 | LKM |
| 289 | -Shopping Mall | JBCC KOMTAR (MRCB BUILDERS) | SCAFFOLDING | Scaffolding work at Komtar JBCC Johor | JOHOR BAHRU (JOHOR) | 2017 | LKM |
| 288 | -Power Plant | TNB CONNAUGHT BRIDGE (EAGLEBURGMANN) | INSULATION | Ducting Insulation Work for Expansion Joint J1 and J3 for GT1A and GT1B | KLANG (SELANGOR) | 2017 | LKM |



PROJECT CUI WORK -
Removal and Review of WaxTape at CUI Idemitsu
Pasir Gudang



COLD INSULATION WORK-
PIR Installation Insulation for LNG Piping at
Pengerang Dialog Warehouse, Johor



PAINTING LABELLING WORK -
Labelling work with Termoplastics for
ASIAFLEX Plant at Tg Langsat



FIBERGLASS WORK -
Applying of Fiberglass onto the severe damaged
cable duck at PPE Titan Group



COLD INSULATION WORK-
PIR Installation Insulation for LNG Piping at
Pengerang Dialog Warehouse, Johor

OUR EXPERIENCES

| SN | Service Range | Client | Type of Work | Work Description | Location of Job | Year | Done By |
|-----|------------------------------------|--|-------------------------|--|--------------------------|------|---------|
| 287 | -Oil, Gas & Petrochemical Industry | SYNTHOMER | SCAFFOLDING | Maintenance Work. Scaffolding for QP Synthomer | PASIR GUDANG (JOHOR) | 2017 | LKM |
| 286 | -Oil, Gas & Petrochemical Industry | PENGERANG LNG TERMINAL (FTI PTE LTD) | INSULATION | PROJECT : Insulation works at RGTf LNG jetty in Pengerang FROM YR Aug' 2017 to Aug 2018. | PENGERANG (JOHOR) | 2017 | LKM |
| 285 | -Oil, Gas & Petrochemical Industry | PENGERANG LNG TERMINAL (FTI PTE LTD) | INSULATION | PROJECT : Insulation works at RGT2 LNG jetty in Pengerang FROM YR June' 2016 to Aug 2017 | PENGERANG (JOHOR) | 2016 | LKM |
| 284 | -Oil, Gas & Petrochemical Industry | SYNTHOMER | INSULATION | IN-HOUSE (MAINTENANCE) Insulation Contractor from YR Sep'2016 to Sep'2017 | PASIR GUDANG (JOHOR) | 2016 | LKM |
| 283 | -Oil, Gas & Petrochemical Industry | SYNTHOMER | INSULATION | PROJECT : SDM FEB 2016 and DEC 2016 Insulation Repair Work | PASIR GUDANG (JOHOR) | 2016 | LKM |
| 282 | -Oil, Gas & Petrochemical Industry | PENGERANG TERMINAL | SCAFFOLDING | IN-HOUSE SCAFFOLDING CONTRACTOR FOR SINCE 2014 TO PRESENT | PENGERANG (JOHOR) | 2016 | LKM |
| 281 | -Manufacturing Industry | SEAGATE | SCAFFOLDING | IN-HOUSE SCAFFOLDING CONTRACTOR FROM YR 2016 to PRESENT | SENAI (JOHOR) | 2016 | LKM |
| 280 | -Oil, Gas & Petrochemical Industry | MUSIM MASTIKA (SOUTHERN CORNER) | SCAFFOLDING | PROJECT : SCAFFOLDING FOR 6 TANKS - EXTERNAL, INTERNAL and ROOFING | TANJUNG LANGSAT (JOHOR) | 2016 | LKM |
| 279 | -Oil, Gas & Petrochemical Industry | JOHOR PORT (SOUTHERN CORNER) | SCAFFOLDING | PROJECT : SCAFFOLDING Work for JETTY and NPBT Johor Port | TANJUNG LANGSAT (JOHOR) | 2016 | LKM |
| 278 | -Food & Beverage Industry | KERRY INGREDIENTS | INSULATION, SCAFFOLDING | One of the Appointed Insulation and Scaffolding Contractor for KERRY TAMPOI and KERRY PLENTONG | TAMPOI, PLENTONG (JOHOR) | 2016 | LKM |
| 277 | -Food & Beverage Industry | FOOD EXCELLENCE | INSULATION | Maintenance : Hot Insulation Work for Boiler Steam and HotWater Pipe | TANJUNG LANGSAT (JOHOR) | 2016 | LKM |
| 276 | -Manufacturing Industry | SEAGATE | INSULATION | PROJECT : Cladding Replacement for CHWP at WWTP 1st Floor | SENAI (JOHOR) | 2016 | LKM |
| 275 | -Oil, Gas & Petrochemical Industry | H.ROSEN ENGINEERING | INSULATION | PROJECT : Insulation Wrapping for underground pipeline | KLANG (SELANGOR) | 2016 | LKM |
| 274 | -Power Plant | SYARIKAT AIR JOHOR (PRO EM INDUSTRIAL) | PAINTING, SCAFFOLDING | PROJECT : Scaffolding and Painting Work for SAJ 14 Tanks | MERSING (JOHOR) | 2016 | LKM |
| 273 | -Manufacturing Industry | SEAGATE | PAINTING, SCAFFOLDING | PROJECT : Scaffolding and Insulation Work for Cooling Tower 1A & 1B | SENAI (JOHOR) | 2016 | LKM |
| 272 | -Oil, Gas & Petrochemical Industry | LINDE MALAYSIA | INSULATION, SCAFFOLDING | PROJECT : INSULATION WORK SHUTDOWN FOR H2 PLANT | PASIR GUDANG (JOHOR) | 2016 | LKM |
| 271 | -Power Plant | TJSB SDN BHD | INSULATION | Insulation Maintenance Work for N1-4 PAF U10 Outage | TANJUNG BIN (JOHOR) | 2016 | LKM |



SCAFFOLDING WORK-
NPBT Tank at Johor Port



HOT INSULATION WORK-
ID Fan insulation work at Tg Bin Power Plant



SCAFFOLDINGWORK-
Samur Projek at Sipitang Sabah



SCAFFOLDINGWORK-
Shut Down works at Kerry Plentong



COLD INSULATION WORK-
Chiller water pipe insulation renewal at Segate
Senai

OUR EXPERIENCES

| SN | Service Range | Client | Type of Work | Work Description | Location of Job | Year | Done By |
|-----|------------------------------------|--|-------------------------|--|--------------------------------|------|---------|
| 270 | -Power Plant | TANJUNG BIN O&M BERHAD | INSULATION | Insulation Maintenance Work for N2-4-F U20 Boiler Outage | TANJUNG BIN (JOHOR) | 2016 | LKM |
| 269 | -Power Plant | JIMAH POWER PLANT (EAGLEBURGMANN) | INSULATION | Removal and Installation of Expansion Joint | PORT DICKSON (NEGERI SEMBILAN) | 2016 | LKM |
| 268 | -Oil, Gas & Petrochemical Industry | PENGERANG TERMINAL | SCAFFOLDING | IN-HOUSE SCAFFOLDING CONTRACTOR FOR YEAR 2014 TO PRESENT | PENGERANG (JOHOR) | 2015 | LKM |
| 267 | -Oil, Gas & Petrochemical Industry | PENGERANG LNG TERMINAL (FTI PTE LTD) | INSULATION | PROJECT : Insulation works at RGT2 LNG jetty in Pengerang FROM YR OCT' 2015 to June 2016 | PENGERANG (JOHOR) | 2015 | LKM |
| 266 | -Oil, Gas & Petrochemical Industry | SABAH AMMONIA UREA (APEX/DMC) | SCAFFOLDING | SAMUR PROJECT : SCAFFOLDING CONTRACTOR SINCE YEAR 2014 TO 2016 | SIPITANG (SABAH) | 2015 | LKM |
| 265 | -Oil, Gas & Petrochemical Industry | TANJUNG BIN O&M BERHAD | INSULATION | Insulation Maintenance Work for J1-2F-U10 Boiler Outage | TANJUNG BIN (JOHOR) | 2015 | LKM |
| 264 | -Oil, Gas & Petrochemical Industry | SPHERE TECH | INSULATION, SCAFFOLDING | PROJECT : Spheretech Blue Scope Project | PASIR GUDANG (JOHOR) | 2015 | LKM |
| 263 | -Manufacturing Industry | SEAGATE | SCAFFOLDING | One of the Appointed Scaffolding Contractor for in-house maintenance work | SENAI (JOHOR) | 2015 | LKM |
| 262 | -Oil, Gas & Petrochemical Industry | LINDE MALAYSIA | INSULATION, SCAFFOLDING | Scaffolding and Insulation Work for Project YR 2015 | PASIR GUDANG (JOHOR) | 2015 | LKM |
| 261 | -Oil, Gas & Petrochemical Industry | SYNTHOMER | INSULATION | Appointed Insulation Contractor since YR 2013 to PRESENT | PASIR GUDANG (JOHOR) | 2015 | LKM |
| 260 | -Oil, Gas & Petrochemical Industry | QP POLYMER | SCAFFOLDING | Appointed Scaffolding Contractor since YR 2013 to PRESENT | TANJUNG LANGSAT (JOHOR) | 2015 | LKM |
| 259 | -Manufacturing Industry | SEAGATE | PAINTING, SCAFFOLDING | Painting and Scaffolding Work for Repairing Roof Top Corroded Ducting | SENAI (JOHOR) | 2015 | LKM |
| 258 | -Power Plant | TNB CONNAUGHT BRIDGE (EAGLEBURGMANN) | INSULATION | Ducting Insulation Work for Expansion Joint J1 and J3 for GT1A and GT1B | KLANG (SELANGOR) | 2015 | LKM |
| 257 | -Power Plant | JIMAH POWER PLANT (EAGLEBURGMANN) | INSULATION | Removal and Installation of Expansion Joint | PORT DICKSON (NEGERI SEMBILAN) | 2015 | LKM |
| 256 | -Oil, Gas & Petrochemical Industry | PETROCHEMICALS | INSULATION, SCAFFOLDING | PROJECT : SDM 2015 Insulation Repair Work During Plant ESD FEB 2015 | PASIR GUDANG (JOHOR) | 2015 | LKM |
| 255 | -Power Plant | TUNKU JAAFAR POWER PLANT (EAGLEBURGMANN) | INSULATION | Proposed Fabric Expansion Joint Replacement Work | PORT DICKSON (NEGERI SEMBILAN) | 2015 | LKM |
| 254 | -Oil, Gas & Petrochemical Industry | ASIAFLEX TECHNIP | PAINTING, SCAFFOLDING | Line Marking with Termoplastic | TANJUNG LANGSAT (JOHOR) | 2015 | LKM |



HOT INSULATION WORK -
Removal and Review of Cladding and Insulation at Malakoff U-10 Boiler Outage, Johor



REFRACTORY WORK-
Refractory work for Acid Water Tank at Bahru Steel, Johor



COLD INSULATION WORK-
PIR Installation Insulation for LNG Piping at Pengerang Dialog Warehouse, Johor



DUCTING INSULATION WORK-
Hot Insulation Work for ShutDown Maintenance at KIMBERLY CLARK



PROJECT BHP 2015 -
Erection and Dismantle of scaffolding work for 14 nos tanks and complete with industrial tanks at BHP Johor Port

OUR EXPERIENCES

| SN | Service Range | Client | Type of Work | Work Description | Location of Job | Year | Done By |
|-----|------------------------------------|---|-------------------------|--|----------------------|------|---------|
| 253 | -Food & Beverage Industry | DAN KAFFE | INSULATION, SCAFFOLDING | Project A Make Insulation Hot and Cold in Plant Spray Drier 1 & 2 | TEBRAU II (JOHOR) | 2014 | LKM |
| 252 | -Oil, Gas & Petrochemical Industry | LOTTE CHEMICAL (WJMA) | SCAFFOLDING | Appointed Scaffolding Contractor for CCR MSR LOTTE TG LANGSAT | TG LANGSAT (JOHOR) | 2014 | LKM |
| 251 | -Oil, Gas & Petrochemical Industry | WHH Engineering & Construction | INSULATION, SCAFFOLDING | Scaffolding & Insulation Work for Project PP2 Turn-Around Year 2014 Static Work Package. | PASIR GUDANG (JOHOR) | 2014 | LKM |
| 250 | -Oil, Gas & Petrochemical Industry | SYNTHOMER | SCAFFOLDING | PROJECT: QP Plan Scaffolding | PASIR GUDANG (JOHOR) | 2014 | LKM |
| 249 | -Oil, Gas & Petrochemical Industry | DESMET (Dynaciate) | INSULATION | PROJECT: Strawberry 5 - Cold and Hot Insulation | BANTING (SELANGOR) | 2014 | LKM |
| 248 | -Oil, Gas & Petrochemical Industry | MOX LINDE | SCAFFOLDING | EMERGENCY Scaffolding Work at Malacca | MALACCA | 2014 | LKM |
| 247 | -Food & Beverage Industry | DAN KAFFE | INSULATION, SCAFFOLDING | Cold Insulation for 11 point of Chilled Water Engine Room | TEBRAU II (JOHOR) | 2014 | LKM |
| 246 | -Civil Construction | PEMBINAAN ASMORA | INSULATION, SCAFFOLDING | Fabrication and Installation of Green Netting | GELANG PATAH (JOHOR) | 2014 | LKM |
| 245 | -Marine Ship | LANGSAT PORT TERMINAL | SCAFFOLDING | Approved contractor for Langsat Port Terminal One and Langsat Port Terminal Two | TG LANGSAT (JOHOR) | 2014 | LKM |
| 244 | -Food & Beverage Industry | KERRY INGREDIENTS | INSULATION, SCAFFOLDING | Scaffolding and Hot Insulation Work CIP KITCHEN DRYER 2 STEAM PIPE | TAMPOI (JOHOR) | 2014 | LKM |
| 243 | -Food & Beverage Industry | DAN KAFFE | INSULATION | Insulation Freeze Conc Pilot Plant | TEBRAU II (JOHOR) | 2014 | LKM |
| 242 | -Oil, Gas & Petrochemical Industry | IDEMITSU | INSULATION, SCAFFOLDING | Replace Insulation for Outlet 44" Pipeline | PASIR GUDANG (JOHOR) | 2014 | LKM |
| 241 | -Oil, Gas & Petrochemical Industry | SANKYU | INSULATION | PROJECT: OSBL TG. Area Along Fencing - 3" BD-1095-3B (OSBL) | PASIR GUDANG (JOHOR) | 2014 | LKM |
| 240 | -Oil, Gas & Petrochemical Industry | SANKYU | INSULATION | Denso Installation and Repair inside Tunnel at Johor Port | PASIR GUDANG (JOHOR) | 2014 | LKM |
| 239 | -Oil, Gas & Petrochemical Industry | LOTTE CHEMICAL (Sankyu) | INSULATION | Insulation Installation for BD Transfer Line Project T3 to Tg Langsat | PASIR GUDANG (JOHOR) | 2014 | LKM |
| 238 | -Oil, Gas & Petrochemical Industry | MALAYSIAN SYNTHETIC RUBBER (Spheretech) | SCAFFOLDING | PROJECT: Installation of Two nos of Cement Surge Tanks | TG LANGSAT (JOHOR) | 2014 | LKM |
| 237 | -Oil, Gas & Petrochemical Industry | MALAYSIAN SYNTHETIC RUBBER (Spheretech) | SCAFFOLDING | PROJECT: Installation of Butadiene Tank | TG LANGSAT (JOHOR) | 2014 | LKM |



INSULATION WORK-
Assembly of Expansion Joint



INSULATION WORK-
Insulation Freeze Conc Pilot Plant



INSULATION WORK-
Insulation Work for Malacca Refinery



INSULATION WORK-
Insulation and Cladding installation for 14 pump room



PROJECT - Painting and Scaffolding work for HTM Tank Idemitsu Petrochemicals (M) PG

OUR EXPERIENCES

| SN | Service Range | Client | Type of Work | Work Description | Location of Job | Year | Done By |
|-----|------------------------------------|--|-------------------------|---|-------------------------|------|---------|
| 236 | - Hospitality Industry | SUTERA HOTEL (Yeo Plumber) | INSULATION | To remove & install new insulation | JOHOR BAHRU (JOHOR) | 2014 | LKM |
| 235 | -Oil, Gas & Petrochemical Industry | LOTTE CHEMICAL (Sankyu) | SCAFFOLDING | Scaffolding for BD MODIFICATION PROJECT PACKAGE | PASIR GUDANG (JOHOR) | 2014 | LKM |
| 234 | -Oil, Gas & Petrochemical Industry | ASIAFLEX | SCAFFOLDING | Maintenance Scaffolding Work | TG LANGSAT (JOHOR) | 2014 | LKM |
| 233 | -Oil, Gas & Petrochemical Industry | ASIAFLEX | PAINTING | Line Marking and Labelling Work for WorkHouse | TG LANGSAT (JOHOR) | 2014 | LKM |
| 232 | -Chemical Industry | CCM CHEMICALS SDN BHD | SCAFFOLDING | Erection and Dismantle of Scaffolding | PASIR GUDANG (JOHOR) | 2014 | LKM |
| 231 | -Oil, Gas & Petrochemical Industry | TANJUNG BIN O&M BERHAD | INSULATION | T-1-5 Boiler Insulation Repair Work | TANJUNG BIN (JOHOR) | 2014 | LKM |
| 230 | -Oil, Gas & Petrochemical Industry | MOX LINDE | SCAFFOLDING | Emergency Scaffolding | MALACCA | 2013 | LKM |
| 229 | -Cement Industry | LAFARGE CEMENT (Kok Hong Engineering) | SCAFFOLDING | Erection and DIDEMITSU SMantle of Scaffolding of 84M Height | TG LANGSAT (JOHOR) | 2013 | LKM |
| 228 | -Oil, Gas & Petrochemical Industry | IDEMITSU SM (Petrochemicals) | INSULATION, SCAFFOLDING | Scaffolding and Insulation Work at V-600 | PASIR GUDANG (JOHOR) | 2013 | LKM |
| 227 | -Oil, Gas & Petrochemical Industry | MUSIM MASTIKA (Ecoscience) | SCAFFOLDING | Scaffolding Contractor for 48 tanks | TG LANGSAT (JOHOR) | 2013 | LKM |
| 226 | -Health Care Industry | KIMBERLY CLARK | INSULATION, SCAFFOLDING | Hood Insulation Replacement for TM2 Shutdown | KLUANG (JOHOR) | 2013 | LKM |
| 225 | -Cement Industry | HOLCIM MALAYSIA | PAINTING | Line Marking for Pedestrian Line and Loading Area | PASIR GUDANG (JOHOR) | 2013 | LKM |
| 224 | -Food & Beverage Industry | DAN KAFFE | INSULATION | Insulation Repair Work for 2 Tube Exchanger | PASIR GUDANG (JOHOR) | 2013 | LKM |
| 223 | -Oil, Gas & Petrochemical Industry | LOTTE CHEMICAL | SCAFFOLDING | YEAR 2013 In-House Scaffolding Contractor | PASIR GUDANG (JOHOR) | 2013 | LKM |
| 222 | -Oil, Gas & Petrochemical Industry | IDEMITSU SM (Petrochemicals) | SCAFFOLDING | YEAR 2013 In-House Scaffolding Contractor | PASIR GUDANG (JOHOR) | 2013 | LKM |
| 221 | -Chemical Industry | POLYPLASTICS (MMK/Dynaciate) | INSULATION | PROJECT MKK-MP 2 | KUANTAN (PAHANG) | 2013 | LKM |
| 220 | -Oil, Gas & Petrochemical Industry | LOTTE CHEMICAL (KNM Process Group) | SCAFFOLDING | Scaffolding for Project Tank Naptha G and H | PASIR GUDANG (JOHOR) | 2013 | LKM |



REFRACTORY WORK -
In the removing process of damaged Fire brick at Boiler



WRAPPING WORK -
Removal and Review of INSURAP



MECHANICALS WORK -
Rejuvenation Work T-360LP platform



COLD INSULATION WORK -
Removal & Renew of Cladding and Insulation at IDEMITSU SM tower, Pasir Gudang



TITAN - TA2006 Insulation, Painting & Scaffolding Work (2006)

OUR EXPERIENCES

| SN | Service Range | Client | Type of Work | Work Description | Location of Job | Year | Done By |
|-----|------------------------------------|---------------------------------------|---------------------------------------|---|-------------------------|------|---------|
| 219 | -Oil, Gas & Petrochemical Industry | IDEMITSU SM (Petrochemicals) | INSULATION , SCAFFOLDING | SDM Turnaraound 2013 | PASIR GUDANG (JOHOR) | 2013 | LKM |
| 218 | -Oil, Gas & Petrochemical Industry | TITAN GROUP | INSULATION, PAINTING & SCAFFOLDING | 2E-231/2E-210 Insulation Replacement | PASIR GUDANG (JOHOR) | 2012 | LKM |
| 217 | -Oil, Gas & Petrochemical Industry | ASIAFLEX | PAINTING | Painting Work for Sliding Door and I-Beam Structure | TG. LANGSAT (JOHOR) | 2012 | LKM |
| 216 | -Oil, Gas & Petrochemical Industry | ENCO SYSTEMS | INSULATION , SCAFFOLDING | Project EDMSM 2 INSULATION | BENTONG (PAHANG) | 2012 | LKM |
| 215 | -Oil, Gas & Petrochemical Industry | IDEMITSU SM | INSULATION , SCAFFOLDING | To fabricate & install cold foam insulation at bay no.13" valve & ACZ | PASIR GUDANG (JOHOR) | 2012 | LKM |
| 214 | -Oil, Gas & Petrochemical Industry | LOTTE CHEMICAL (KNM Process Group) | SCAFFOLDING | Scaffolding for Project Tank Benzene | PASIR GUDANG (JOHOR) | 2012 | LKM |
| 213 | -Oil, Gas & Petrochemical Industry | MOX LINDE | INSULATION | Insulation Maintenance for ASU Plant | PASIR GUDANG (JOHOR) | 2012 | LKM |
| 212 | -Marine Ship | SUNBORN MARINE | INSULATION | Fabricate & Install Insulation With Fabric For Fuel Oil Systems 721 | LUMUT (PERAK) | 2012 | LKM |
| 211 | -Oil, Gas & Petrochemical Industry | TITAN GROUP | INSULATION, PAINTING & SCAFFOLDING | PROJECT- TPC 1 Pipe rejuvenation Phase 2 | PASIR GUDANG (JOHOR) | 2011 | LKM |
| 210 | -Oil, Gas & Petrochemical Industry | TITAN GROUP (Sankyu) | INSULATION, PAINTING | Hot & Cold Insulation Work - SDM 2011 | PASIR GUDANG (JOHOR) | 2011 | LKM |
| 209 | -Oil, Gas & Petrochemical Industry | TITAN GROUP | INSULATION, PAINTING & SCAFFOLDING | Project- H-111 Zone 3 & 4 Refractory And Insulation Work | PASIR GUDANG (JOHOR) | 2011 | LKM |
| 208 | -Marine Ship | BJ SERVICES | INSULATION | Hot Insulation Work At PTP Port Johor | PASIR GUDANG (JOHOR) | 2011 | LKM |
| 207 | -Oil, Gas & Petrochemical Industry | TITAN GROUP | INSULATION, PAINTING & SCAFFOLDING | Project-Sphere Tank Cold Insulation Cladding Replacement | PASIR GUDANG (JOHOR) | 2011 | LKM |
| 206 | -Marine Ship | SUNBORN MARINE | INSULATION | CONTRACT: Installation Of Mineral Wool On Decks, Bulkheads & Stiffeners | LUMUT (PERAK) | 2011 | LKM |
| 205 | -Oil, Gas & Petrochemical Industry | IDEMITSU SM (Sankyu) | INSULATION, PAINTING & SCAFFOLDING | IDEMITSU SM Shutdown YR2011-Control Valve Inspection & Overhaul List | PASIR GUDANG (JOHOR) | 2011 | LKM |
| 204 | -Oil, Gas & Petrochemical Industry | PETROCHEMICALS | SCAFFOLDING | Scaffolding Work for M3 Shutdown Maintenance | PASIR GUDANG (JOHOR) | 2011 | LKM |
| 203 | -Oil, Gas & Petrochemical Industry | SEAGATE (SENSION M&E ENG) | INSULATION, PAINTING | Insulation Work at Senai Seagate | SENAI (JOHOR) | 2011 | LKM |



HOT INSULATION WORK -
Removal and Review of Cladding and Insulation at Pahlawan Power Station, Malacca



PROJECT PD2 REHABILITATION -
Installation of Calcium Silicate for Injet GE Plenum at Tungku Jaafar Power Station, Port Dickson Negeri Sembilan



SCAFFOLDING WORK -
Scaffolding for Sphere Tank for KNM Process Group



FIBERGLASS WORK -
Applying of Fiberglass onto the severe damaged cable duck at PPE Titan Group



PROJECT CUI -
Removal, replace of insulation and cladding and finished with industrial painting for the corroded equipment at Titan Group

OUR EXPERIENCES

| SN | Service Range | Client | Type of Work | Work Description | Location of Job | Year | Done By |
|-----|------------------------------------|---------------------------------|------------------------------------|---|----------------------|------|---------|
| 202 | -Oil, Gas & Petrochemical Industry | SNC INDUSTRIAL | INSULATION, PAINTING | Project- Insulation Work At OTO 1 & 2 | PASIR GUDANG (JOHOR) | 2011 | LKM |
| 201 | -Oil, Gas & Petrochemical Industry | TITAN GROUP (Spark Engineering) | INSULATION, PAINTING & SCAFFOLDING | Titan T/A 2010 Package 2 Insulation Work | PASIR GUDANG (JOHOR) | 2010 | LKM |
| 200 | -Oil, Gas & Petrochemical Industry | IDEMITSU SM (Petrochemicals) | INSULATION, SCAFFOLDING | CUI Scaffolding & Insulation Work at Idemitsu | PASIR GUDANG (JOHOR) | 2010 | LKM |
| 199 | -Oil, Gas & Petrochemical Industry | SANKYU | INSULATION, PAINTING & SCAFFOLDING | Project- Titan 2010 TA Runback Condenser and Piping Replacement | PASIR GUDANG (JOHOR) | 2010 | LKM |
| 198 | -Oil, Gas & Petrochemical Industry | MOX | PAINTING, SCAFFOLDING | Project-Painting And Scaffolding Work for T2 ASU II | PASIR GUDANG (JOHOR) | 2010 | LKM |
| 197 | -Oil, Gas & Petrochemical Industry | TITAN GROUP | INSULATION, PAINTING & SCAFFOLDING | Project-Insulation Work at TPC-1 Utility Piping Rejuvenation Work | PASIR GUDANG (JOHOR) | 2010 | LKM |
| 196 | -Oil, Gas & Petrochemical Industry | TITAN GROUP | INSULATION, PAINTING & SCAFFOLDING | PROJECT-TPC-1 Piping Rejuvenation at Utility Area | PASIR GUDANG (JOHOR) | 2010 | LKM |
| 195 | -Oil, Gas & Petrochemical Industry | TITAN GROUP | INSULATION | PROJECT-PC 2 Turnaround Cold Insulation Work | PASIR GUDANG (JOHOR) | 2010 | LKM |
| 194 | -Oil, Gas & Petrochemical Industry | TITAN GROUP | INSULATION | PROJECT-Cold Pipe Insulation Work at Terminal 2 | PASIR GUDANG (JOHOR) | 2010 | LKM |
| 193 | -Oil, Gas & Petrochemical Industry | MALINDO RAYA ENTERPRISE | INSULATION | Insulation Work | (TERENGGANU) | 2010 | LKM |
| 192 | -Oil, Gas & Petrochemical Industry | VENTURE PROMOTIONS | PAINTING, HRC COATING | PROJECT-Furnace Coating with H.R.C (II) Heat Radiation Coating | (PENANG) | 2010 | LKM |
| 191 | -Marine Ship | MMHE | INSULATION | PROJECT T-12 SEADRILL-Supply of Manpower & Material | PASIR GUDANG (JOHOR) | 2010 | LKM |
| 190 | -Power Plant | RANGKAI POSITIF | INSULATION | PROJECT-Insulation work for Outage Unit 10/30 | TANJONG BIN (JOHOR) | 2010 | LKM |
| 189 | -Oil, Gas & Petrochemical Industry | KELINGTON TECHNOLOGIES | INSULATION | Insulation Exchanger At Grind Coolant | SENAI (JOHOR) | 2010 | LKM |
| 188 | -Oil, Gas & Petrochemical Industry | MOX | INSULATION | PROJECT-Insulation for Lox Backup System & Liquid Oxygen Pipeline | PASIR GUDANG (JOHOR) | 2010 | LKM |
| 187 | -Marine Ship | MMHE | INSULATION | Insulation Work for Vessel Nang Nuan 252 | PASIR GUDANG (JOHOR) | 2010 | LKM |
| 186 | -Oil, Gas & Petrochemical Industry | TITAN GROUP | INSULATION, REFRACTORY | PROJECT-H-111 Zone 3 & 4 Refractory And Insulation Work | PASIR GUDANG (JOHOR) | 2010 | LKM |



SNC Pasir Gudang Duct Flanges Ceramic Insulation Repair



PROJECT PD2 REHABILITATION - Installation of Calcium Silicate for HP 2B Drum at Tungku Jaafar Power Station Port Dickson, Negeri Sembilan



REFRACTORY REPAIR WORK



PROJECT INSULATION - Installation of Calcium Silicate for fuel gas line at EESB PD Power Station



SCAFFOLDING WORK - Scaffolding Hanging Suspension Type at Lotte Chemicals Titan (M) Sdn Bhd

OUR EXPERIENCES

| SN | Service Range | Client | Type of Work | Work Description | Location of Job | Year | Done By |
|-----|------------------------------------|----------------------------------|--|--|----------------------|------|---------|
| 185 | -Oil, Gas & Petrochemical Industry | MMHE | INSULATION | PROJECT-Insulation For Generator, Portable Hot Water System & Hot Water System & Hot Water Loop System | PASIR GUDANG (JOHOR) | 2010 | LKM |
| 184 | -Oil, Gas & Petrochemical Industry | TITAN GROUP | WRAPPING, PAINTING, SCAFFOLDING, MECHANICALS | PROJECT-Renewal of pipeline with clock spring wrapping material terminal OSBL pipeline | PASIR GUDANG (JOHOR) | 2009 | LKM |
| 183 | -Oil, Gas & Petrochemical Industry | TITAN GROUP | INSULATION | PROJECT-Boiler B Hot Spot Repair Work | PASIR GUDANG (JOHOR) | 2009 | LKM |
| 182 | -Oil, Gas & Petrochemical Industry | TITAN GROUP | INSULATION, REFRACTORY | PROJECT-2H Furnace and Insulation Repair Work | PASIR GUDANG (JOHOR) | 2009 | LKM |
| 181 | -Oil, Gas & Petrochemical Industry | MOX | INSULATION,SCAFFOLDING | PROJECT-New Machine House Acoustic Insulation Work | PASIR GUDANG (JOHOR) | 2009 | LKM |
| 180 | -Oil, Gas & Petrochemical Industry | TITAN GROUP | INSULATION, PAINTING | PROJECT-2H Furnace Internal Wall Coating | PASIR GUDANG (JOHOR) | 2009 | LKM |
| 179 | -Oil, Gas & Petrochemical Industry | TITAN GROUP | INSULATION, REFRACTORY | PROJECT-Boiler B Cleaning And Brick Repair Work | PASIR GUDANG (JOHOR) | 2009 | LKM |
| 178 | -Oil, Gas & Petrochemical Industry | TITAN GROUP | INSULATION , PAINTING, MECHANICALS | PROJECT-Rejuvenation Work T-360LP Depropanizer Tower | PASIR GUDANG (JOHOR) | 2009 | LKM |
| 177 | -Oil, Gas & Petrochemical Industry | TITAN GROUP | INSULATION | PROJECT-Cold Insulation Work For DC line At PE3 Titan Tanjung Langsung, Pasir Gudang. | PASIR GUDANG (JOHOR) | 2009 | LKM |
| 176 | -Oil, Gas & Petrochemical Industry | TITAN GROUP | INSULATION | PROJECT-Cold Insulation Works At Ethylene Line at IDEMITSU SM,Pasir Gudang. | PASIR GUDANG (JOHOR) | 2009 | LKM |
| 175 | -Oil, Gas & Petrochemical Industry | IDEMITSU SM (Petrochemicals) | SCAFFOLDING, PAINTING | Scaffolding And Painting Works For RDM LINE at IDEMITSU SM,Pasir Gudang. | PASIR GUDANG (JOHOR) | 2009 | LKM |
| 174 | -Oil, Gas & Petrochemical Industry | IDEMITSU SM (Sankyu) | REFRACTORY | Fireproofing Work at IDEMITSU SM(M),Pasir Gudang | PASIR GUDANG (JOHOR) | 2009 | LKM |
| 173 | -Oil, Gas & Petrochemical Industry | IDEMITSU SM (Sankyu) | REFRACTORY | PROJECT-IBTS (JB195) -Insulation for Piping & Equ. | PASIR GUDANG (JOHOR) | 2009 | LKM |
| 172 | -Oil, Gas & Petrochemical Industry | IDEMITSU SM (Petrochemicals) | INSULATION , PAINTING, SCAFFOLDING,HRC COATING | Scaffolding,HRC Coating and Painting Works For Boiler at IDEMITSU SM,Pasir Gudang. | PASIR GUDANG (JOHOR) | 2009 | LKM |
| 171 | -Oil, Gas & Petrochemical Industry | TITAN GROUP | REFRACTORY | Furnace Castable Repair Work | PASIR GUDANG (JOHOR) | 2009 | LKM |
| 170 | -Oil, Gas & Petrochemical Industry | TITAN GROUP | INSULATION | Insulation Work For H-112 Burner air Register | PASIR GUDANG (JOHOR) | 2009 | LKM |



INSULATION WORK -
Installation of Rockwool to the tower at Teluk Jawa Project



SNC - OTO Overhead repair Insulation work (2011)



SCAFFOLDING WORK -
Heavy Duty Scaffolding Erection and Dismantle at Lotte Chemicals Titan



PROJECT INSULATION -
Installation of Calcium Silicate for fuel gas line at EESB PD Power Station



INSULATION WORK -
Mattress Fabrication



OUR EXPERIENCES

| SN | Service Range | Client | Type of Work | Work Description | Location of Job | Year | Done By |
|-----|--------------------------------------|--------------------------------|---|--|-----------------------------|------|---------|
| 169 | -Oil, Gas & Petrochemical Industry | IDEMITSU SM (Sankyu) | INSULATION , SCAFFOLDING | PROJECT-IBTS -Insulation and scaffolding for TOWER | PASIR GUDANG (JOHOR) | 2009 | LKM |
| 168 | -Oil, Gas & Petrochemical Industry | IDEMITSU SM (Petrochemicals) | SCAFFOLDING | Scaffolding work -remove and install back manhole at IDEMITSU SM,Pasir Gudang. | PASIR GUDANG (JOHOR) | 2009 | LKM |
| 167 | -Marine Ship | MMHE | INSULATION | PROJECT-Insulation for Gen,Hot Water System. - FPSO | PASIR GUDANG (JOHOR) | 2009 | LK |
| 166 | -Marine Ship | MMHE | INSULATION | PROJECT-Insulation for Gen,Hot Water System. - MOPLU | PASIR GUDANG (JOHOR) | 2009 | LK |
| 165 | -Marine Ship | MMHE | INSULATION | PROJECT-Insulation for Gen,Hot Water System. - T12 | PASIR GUDANG (JOHOR) | 2009 | LK |
| 164 | -Wood-based, Textile, Paper & Others | MALIDO RAYA ENTR. | INSULATION | Hot Insulation Works | PASIR GUDANG (JOHOR) | 2009 | LK |
| 163 | - Power Plant | TNB GENERATION (Eagleburgmann) | INSULATION , SCAFFOLDING | PROJECT-Work At TNB GENERATION -GT3B | PASIR GUDANG (JOHOR) | 2009 | NSB |
| 162 | -Marine Ship | MMHE | INSULATION | PROJECT-Insulation for Gen,Hot Water System. - T11 | PASIR GUDANG (JOHOR) | 2008 | LK |
| 162 | -Oil, Gas & Petrochemical Industry | TITAN GROUP | INSULATION | PROJECT-Fumigation & Insulation Work At Underground Tunnel | PASIR GUDANG (JOHOR) | 2008 | LKM |
| 161 | -Oil, Gas & Petrochemical Industry | TITAN GROUP | INSULATION | PROJECT-Maintenance works | PASIR GUDANG (JOHOR) | 2008 | LKM |
| 160 | -Oil, Gas & Petrochemical Industry | TITAN GROUP | INSULATION | PROJECT-Refractory Work & Furnace insulation for all 12 zones | PASIR GUDANG (JOHOR) | 2008 | LKM |
| 159 | -Oil, Gas & Petrochemical Industry | TITAN GROUP (KSL) | INSULATION | PROJECT-Cold Insulation Work At Titan, Pasir Gudang. | PASIR GUDANG (JOHOR) | 2008 | LKM |
| 158 | - Power Industry | TNB GENERATION (Eagleburgmann) | DIVETER DAMPER | Repair & Sevicng of Diveter Damper Door GT.3A&B (Worked with principal Eagleburgmann (M) Sdn Bhd) | PASIR GUDANG (JOHOR) | 2008 | NSB |
| 157 | - Power Industry | TNB GENERATION (Sikojaya) | REHABILITATION PROJECT (PHASE 2 - 750 MW) | 2 units HRSG - Internal & External Insulation 2 units GT, Piping - Insulation 1 unit Steam Turbine | P.DICKSON (NEGERI SEMBILAN) | 2008 | LKM |
| 156 | - Power Industry | TNB GENERATION (Eagleburgmann) | DIVETER DAMPER | Repair & Sevicng of Diveter Damper Door GT.3A&B (Worked with principal Eagleburgmann (M) Sdn Bhd) | PASIR GUDANG (JOHOR) | 2008 | NSB |
| 155 | -Marine Ship | MMHE | INSULATION | Insulation for Gen,Hot Water System. - T10 | PASIR GUDANG (JOHOR) | 2007 | LK |
| 154 | -Oil, Gas & Petrochemical Industry | TITAN GROUP | FUMIGATION | Fumigation Work At Underground Tunnel | PASIR GUDANG (JOHOR) | 2007 | LKM |



SCAFFOLDING WORK -
TPC 1 Utility Main Piperack Rejuvenation at Lotte Chemicals Titan (M) Sdn Bhd



HOT INSULATION WORK -
Removal and Review of Cladding and Insulation at ALSTOM POWER PLANT



WRAPPING WORK -
Removal and Renew of Denso Tape



PAINTING WORK -
Pedestrian Walk Way at Holcim Warehouse Plant at Pasir Gudang



PROJECT PD2 REHABILITATION -
Installation of Calcium Silicate for Vessel Drum at Tungku Jaafar Power Plant Port Dickson, Negeri Sembilan

OUR EXPERIENCES

| SN | Service Range | Client | Type of Work | Work Description | Location of Job | Year | Done By |
|-----|------------------------------------|---|-----------------------|--|-----------------------|------|---------|
| 153 | -Oil, Gas & Petrochemical Industry | Impian Tekad | INSULATION | Installation of Insulation for Piping & Vessel | KOTA KINABARU (SABAH) | 2007 | LKM |
| 152 | -Oil, Gas & Petrochemical Industry | ASK (Singapore) | INSULATION | Installation of Insulation | PASIR GUDANG (JOHOR) | 2007 | LKM |
| 151 | -Oil, Gas & Petrochemical Industry | TITAN GROUP | INSULATION | Installation of Insulation | PASIR GUDANG (JOHOR) | 2007 | LKM |
| 150 | -Oil, Gas & Petrochemical Industry | TITAN GROUP | INSULATION | Turnaround - piping insulation replacement | PASIR GUDANG (JOHOR) | 2007 | LKM |
| 149 | -Oil, Gas & Petrochemical Industry | TITAN GROUP | MECHANICALS | Turnaround - Servicing of Safety valves | PASIR GUDANG (JOHOR) | 2006 | LKM |
| 148 | -Oil, Gas & Petrochemical Industry | TITAN GROUP | INSULATION | Turnaround - equipment insulation replacement | PASIR GUDANG (JOHOR) | 2006 | LKM |
| 147 | -Oil, Gas & Petrochemical Industry | TITAN GROUP | INSULATION | Turnaround - piping insulation replacement | PASIR GUDANG (JOHOR) | 2006 | LKM |
| 146 | -Oil, Gas & Petrochemical Industry | TITAN GROUP | INSULATION | Turnaround - tower T-440 insulation replacement | PASIR GUDANG (JOHOR) | 2006 | LKM |
| 145 | -Oil, Gas & Petrochemical Industry | TITAN GROUP | INSULATION | Turnaround - equipment cladding replacement | PASIR GUDANG (JOHOR) | 2006 | LKM |
| 144 | -Oil, Gas & Petrochemical Industry | TITAN GROUP | INSULATION | Turnaround - furnace insulation for all 12 zones | PASIR GUDANG (JOHOR) | 2006 | LKM |
| 143 | - Power Industry | TELUK SALUT POWER STATION (Ranhill Engineers) | INSULATION | PROJECT-Fabrication & Installation Cladding & Insulation for All Piping Work | KOTA KINABALU (SABAH) | 2006 | LKM |
| 142 | - Power Industry | TELUK SALUT POWER STATION (Ranhill Engineers) | INSULATION | PROJECT-Fabrication & Installation Cladding & Insulation for All Piping Work | KOTA KINABALU (SABAH) | 2006 | LKM |
| 141 | -Oil, Gas & Petrochemical Industry | TITAN GROUP | INSULATION | Maintenance works | PASIR GUDANG (JOHOR) | 2005 | LKM |
| 140 | -Oil, Gas & Petrochemical Industry | MSE | INSULATION | Vessel insulation replacement | PASIR GUDANG (JOHOR) | 2005 | LKM |
| 139 | -Oil, Gas & Petrochemical Industry | TITAN GROUP | INSULATION | Maintenance works | PASIR GUDANG (JOHOR) | 2005 | LKM |
| 138 | -Oil, Gas & Petrochemical Industry | Aalborg Industries P/L | INSULATION,REFRACTORY | Insulation repair/installation | PASIR GUDANG (JOHOR) | 2005 | LKM |
| 137 | -Oil, Gas & Petrochemical Industry | White Horse Ceramic | INSULATION | Insulation repair/installation | PASIR GUDANG (JOHOR) | 2005 | LKM |



MATTRESS INSULATION -
Mattress fabrication and installation for Turbine at
ALSTOM POWER PLANT



FURNACE MANHOLE INSULATION -
Installation of Kaowool / Ceramic for furnace at
EESB PD Power Station



SCAFFOLDING & INSULATION WORK -
Removal and Renew of Cladding and Insulation
at TNB Generation



PAINTING WORK -
Palletize Loading Bay at Holcim Warehouse Plant
at Pasir Gudang



SCAFFOLDING WORK -
Erection scaffolding

OUR EXPERIENCES

| SN | Service Range | Client | Type of Work | Work Description | Location of Job | Year | Done By |
|-----|------------------------------------|------------------------------|--------------|---|-----------------------------|------|---------|
| 136 | -Oil, Gas & Petrochemical Industry | MOX | INSULATION | Insulation repair/installation | PASIR GUDANG (JOHOR) | 2005 | LKM |
| 135 | -Oil, Gas & Petrochemical Industry | Industrial Services P/L | INSULATION | Refractory Works | PASIR GUDANG (JOHOR) | 2005 | LKM |
| 134 | -Oil, Gas & Petrochemical Industry | Gusteam Corp. S/B | INSULATION | Insulation repair/installation | PASIR GUDANG (JOHOR) | 2005 | LKM |
| 133 | -Marine Ship | MMHE | INSULATION | Insulation for Gen, Hot Water System. - T09 | PASIR GUDANG (JOHOR) | 2005 | LK |
| 132 | -Oil, Gas & Petrochemical Industry | White Horse Ceramic Ind. S/B | INSULATION | Insulation repair/installation | PASIR GUDANG (JOHOR) | 2004 | LKM |
| 131 | -Oil, Gas & Petrochemical Industry | TITAN GROUP | INSULATION | Insulation repair/installation | PASIR GUDANG (JOHOR) | 2004 | LKM |
| 130 | -Oil, Gas & Petrochemical Industry | Teknik Janakuasa S/B | INSULATION | Insulation repair/installation | LUMUT (PERAK) | 2004 | LKM |
| 129 | -Oil, Gas & Petrochemical Industry | Stanchem Ind. (M) S/B | INSULATION | Insulation repair/installation | PASIR GUDANG (JOHOR) | 2004 | LKM |
| 128 | -Oil, Gas & Petrochemical Industry | SNC Industrial Laminates S/B | INSULATION | Insulation repair/installation | PASIR GUDANG (JOHOR) | 2004 | LKM |
| 127 | -Oil, Gas & Petrochemical Industry | Pal maju Edible Oil S/B | INSULATION | Insulation repair/installation | PASIR GUDANG (JOHOR) | 2004 | LKM |
| 126 | -Oil, Gas & Petrochemical Industry | Nisshacorp S/B | INSULATION | Boiler insulation | (SELANGOR) | 2004 | LKM |
| 125 | -Oil, Gas & Petrochemical Industry | MOX | INSULATION | Insulation repair/installation | PASIR GUDANG (JOHOR) | 2004 | LKM |
| 124 | -Oil, Gas & Petrochemical Industry | MMHE | INSULATION | Vessel Insulation repair/installation | PASIR GUDANG (JOHOR) | 2004 | LKM |
| 123 | -Oil, Gas & Petrochemical Industry | Kim Yen Metal Tech S/B | INSULATION | Insulation repair/installation | PASIR GUDANG (JOHOR) | 2004 | LKM |
| 122 | -Oil, Gas & Petrochemical Industry | Industrial Services P/L | INSULATION | Insulation repair/installation | PASIR GUDANG (JOHOR) | 2004 | LKM |
| 121 | -Oil, Gas & Petrochemical Industry | Impian Tekad S/B | INSULATION | Insulation repair/installation | (SELANGOR) | 2004 | LKM |
| 120 | -Oil, Gas & Petrochemical Industry | Equator Engineering S/B | INSULATION | Insulation installation | T.N.B P.D (NEGERI SEMBILAN) | 2004 | LKM |



SCAFFOLDING & INSULATION WORK -
Removal and Renew of Cladding and Insulation at
TNB Generation



SCAFFOLDING WORK -
Renew of Cladding and Insulation at MMHE T-12



PAINTING WORK -
Painting on chequered plate at Asiaflex (Technip)
Pasir Gudang



HOT INSULATION -
Installation of Calcium Silicate at EESB PD Power
Station GT-1



CERAMIC INSULATION -
Installation of Kaowool / Ceramic for Furnace at
EESB PD Power Station

OUR EXPERIENCES

| SN | Service Range | Client | Type of Work | Work Description | Location of Job | Year | Done By |
|-----|------------------------------------|--|--------------------|---|------------------------------------|------|---------|
| 119 | -Oil, Gas & Petrochemical Industry | ASK (Singapore) | INSULATION | Insulation repair/installation | SINGAPORE | 2004 | LKM |
| 118 | - Power Industry | Tuanku Jaafar Port Dickson, Power Plant MHI / EESB | REHABILITATION | PROJECT-2 units HRSG - Internal & External Insulation 2 units GT, Piping - Insulation 1 unit Steam Turbine Insulation | Port Dickson (NEGERI SEMBILAN) | 2004 | LKM |
| 117 | -Oil, Gas & Petrochemical Industry | Dialog E & C S/B | INSULATION | PROJECT-Equipment & Manpower Supply for Insulation Work | BPC-BDO KUANTAN (PAHANG) | 2003 | NSB |
| 116 | - Power Industry | Perlis Power Plant Alstom Power/ Impian Tekad | INSULATION | PROJECT-Units Insulation & Cladding of Heat Recovery Steam Generator | (PERLIS) | 2002 | LKM |
| 115 | - Power Industry | LUMUT POWER PLANT (Alstom Power/Impian Tekad) | INSULATION | PROJECT-HRSG - 3 Units Insulation & Cladding of Heat Recovery Steam Generator | LUMUT (PERAK) | 2002 | LKM |
| 114 | - Power Industry | TNB GENERATION /CMI Thai Services | OVERHAUL OF BOILER | PROJECT-HRSG - Tubes, Supports, Ducting, Diverter, and Expansion Joint replacement for 2 units of CMI Waste Heat Boiler (5/11/01 - 7/05/02) | CBPS, KLANG (SELANGOR) | 2002 | NSB |
| 113 | -Oil, Gas & Petrochemical Industry | Amoco Chemical | INSULATION | Plant Turnaround 2001 | GEBENG KUANTAN (PAHANG) | 2001 | LKM |
| 112 | -Oil, Gas & Petrochemical Industry | H.L. Engineering (M) Sdn Bhd | INSULATION | Breather Silencer at Defuser Section | UTM SKUDAI (JOHOR) | 2001 | LKM |
| 111 | -Oil, Gas & Petrochemical Industry | TITAN GROUP | INSULATION | Maintenance Contract-Yearly Basis | PASIR GUDANG (JOHOR) | 2001 | LKM |
| 110 | -Oil, Gas & Petrochemical Industry | TITAN GROUP | INSULATION | Plant Turnaround Jan 2001 | PASIR GUDANG (JOHOR) | 2001 | LKM |
| 109 | - Power Industry | TNB GENERATION | DIVETER DAMPER | Repair & Sevicng of Diveter Damper Door GT.3A&B (Worked with principal) | PASIR GUDANG (JOHOR) | 2001 | NSB |
| 108 | - Power Industry | POWERTEK BERHAD | DIVETER DAMPER | Repair & Sevicng of Diveter Damper Door GT.1&2 (Worked with principal CMI Thai Services) | S.J.Tanjung Kling <Pahlawan Power> | 2001 | NSB |
| 107 | - Power Industry | TNB GENERATION | INSULATION | GT.6A Chimney Repair | PASIR GUDANG (JOHOR) | 2001 | NSB |
| 106 | - Power Industry | SEIMENS POWER GENERATION ASIA PACIFIC | INSULATION | Removal, Repair & Reinstallation for Unit 1 & 2 | Amata Power Station | 2000 | NSB |
| 105 | - Power Industry | TNB GENERATION | REFRACTORY | Boiler 1 Furnace Hopper and Water Wall Fins (Repair) | PASIR GUDANG (JOHOR) | 2000 | NSB |
| 104 | - Power Industry | POWERTEK BERHAD | DIVETER DAMPER | Repair & Sevicng of Diveter Damper Door Hydraulic & Air Barrier System for Unit 1 & 2 (Supervision by CMI Thai Services) | S.J.TANJUNG KLING (MALACCA) | 2000 | NSB |
| 103 | - Power Industry | TNB GENERATION | INSULATION | Repair & Reinstalling of Insulation & Cladding for GT.6 Chimney | CBPS, KLANG (SELANGOR) | 2000 | NSB |



TNB-AAM Expansion Joint (2001)



TITAN - TA11 Furnace work (Refractory,SLE,Radiant Box , Shadow box & ect) (2011)



TITAN - TA2006 Insulation,Painting & Scaffolding Work (2006)



PAINTING WORK - Apply under coat of paint



SCAFFOLDING WORK - Erection scaffolding

OUR EXPERIENCES

| SN | Service Range | Client | Type of Work | Work Description | Location of Job | Year | Done By |
|-----|------------------------------------|---------------------------|---------------------|---|-----------------------------|------|---------|
| 102 | -Oil, Gas & Petrochemical Industry | TITAN GROUP | MECHANICAL | Repair works Platforms, Monkey ladders, Pipe Supports etc | PASIR GUDANG (JOHOR) | 2000 | LKM |
| 101 | -Oil, Gas & Petrochemical Industry | Titan, TPC Plant | INSULATION | Removal and Re-Insulation of Towers 410, 420, & Tower 470 | PASIR GUDANG (JOHOR) | 2000 | LKM |
| 100 | -Oil, Gas & Petrochemical Industry | ASK (Singapore) | INSULATION | Maintenance Contract | SOP JURONG | 2000 | LK(S) |
| 99 | -Oil, Gas & Petrochemical Industry | Fuji Kosan (Singapore) | INSULATION | Insulation Erection At New Plant | SOP JURONG | 2000 | LK(S) |
| 98 | -Oil, Gas & Petrochemical Industry | Allandes Modular Engr (S) | INSULATION | Hot & Cold for new Extension | REDOX CRODA (SELANGOR) | 2000 | LKM |
| 97 | -Oil, Gas & Petrochemical Industry | JGC | REFRACTORY | Hot & Cold for new Extension | PASIR GUDANG (JOHOR) | 2000 | LKM |
| 96 | -Oil, Gas & Petrochemical Industry | Amoco Chemical | INSULATION | Major Turnaround | GEBENG (KUANTAN) | 2000 | LK |
| 95 | -Oil, Gas & Petrochemical Industry | JGC | INSULATION | Acoustic Insulation | PASIR GUDANG (JOHOR) | 2000 | LK |
| 94 | -Oil, Gas & Petrochemical Industry | Amoco Chemical | INSULATION | Maintenance Contract - Yearly Basis | GEBENG (KUANTAN) | 2000 | LK |
| 93 | -Oil, Gas & Petrochemical Industry | TITAN GROUP | INSULATION | Maintenance Contract - Yearly Basic | PASIR GUDANG (JOHOR) | 2000 | LK |
| 92 | - Power Industry | YTL Power | INSULATION | GT.11 & 12 Internal & External | PASIR GUDANG (JOHOR) | 1999 | NSB |
| 91 | - Power Industry | Powertek Bhd | EXPANSION JOINTS | Supply and Installation of 3 Expansion Joint (Unit 1 & 2) (Pahlawan Power) | S.J.TANJUNG KLING (MALACCA) | 1999 | NSB |
| 90 | - Power Industry | TNB GENERATION - REMACO | INSULATION | Unit 2 (120MW) Turbine Casing & Pipe Works | PASIR GUDANG (JOHOR) | 1999 | NSB |
| 89 | - Power Industry | TNB GENERATION | INSULATION | Provided Assistance to our Principal 'Toyo Rubber (M) S/B' for Anion Tank Internals | PASIR GUDANG (JOHOR) | 1999 | NSB |
| 88 | - Power Industry | YTL POWER STATION | CATHODIC PROTECTION | Provided Assistance to our Principal 'Corrosion Engineering Ingolf Falk' | PASIR GUDANG (JOHOR) | 1999 | NSB |
| 87 | - Power Industry | TNB GENERATION | REFRACTORY | For Boiler No. 2 | PASIR GUDANG (JOHOR) | 1999 | NSB |
| 86 | - Power Industry | TNB GENERATION | REPAIRS | Air Cooled Cond. Fans - Housing Segments Replaced | CBPS, KLANG (SELANGOR) | 1999 | NSB |



TITAN -Boiler B (PK-3202) Refractory Repair Work (2009)



SCAFFOLDING WORK - Erection scaffolding shelter with Canvas



TITAN - TK5110A,B,C,D&E Cold Insulation Cladding Replace Work (2012)



PROJECT -Corrosion Under Insulation Inspection (PIPING & VESSEL) at IDEMITSU SM(M) Pasir Gudang,JB



PROJECT -Painting for facility door and Beam structure at Asiaflex (Technip) Pasir Gudang



OUR EXPERIENCES

| SN | Service Range | Client | Type of Work | Work Description | Location of Job | Year | Done By |
|----|------------------------------------|----------------------|---------------------|--|-----------------------------|------|---------|
| 85 | - Power Industry | TNB GENERATION | EXPANSION JOINTS | Supplied 11 units - for G.T. Combined Cycle | PAKA, P.STATION (JOHOR) | 1999 | NSB |
| 84 | - Power Industry | ABB POWER GENERATION | INSULATION | For G.T. Combined Cycle Plant | TG. LANGSAT (JOHOR) | 1999 | NSB |
| 83 | - Power Industry | ABB POWER GENERATION | INSULATION | For G.T. Combined Cycle Plant | PASIR GUDANG (JOHOR) | 1999 | NSB |
| 82 | - Power Industry | TNB GENERATION | LINING RUBBER | Provided Assistance to our Principal 'Toyo Rubber (M) S/B' for W.T.P. Tank Internal. | PASIR GUDANG (JOHOR) | 1999 | NSB |
| 81 | - Power Industry | TNB GENERATION | EXPANSION JOINTS | Supply for G.T.'s 3,4,& 5 | CBPS, KLANG (SELANGOR) | 1999 | NSB |
| 80 | -Oil, Gas & Petrochemical Industry | TITAN GROUP | INSULATION | TPC, TPE & TPP Turnaround | PASIR GUDANG (JOHOR) | 1999 | LK |
| 79 | -Oil, Gas & Petrochemical Industry | Cana - Tex | STUD WELDING | For Absorber Tower (T-3100) | BPC ACRYLICS COMP. GEBENG | 1999 | NSB |
| 78 | -Oil, Gas & Petrochemical Industry | Plibrico /ASK | REFRACTORY | Shell LRCC Plant | SHELL P.D (NEGERI SEMBILAN) | 1999 | LK |
| 77 | -Oil, Gas & Petrochemical Industry | TITAN GROUP | INSULATION | In House Contractor for TPC, TPE, & TPP Plant | PASIR GUDANG (JOHOR) | 1998 | LK |
| 76 | -Oil, Gas & Petrochemical Industry | Shell (F.O.M) | REFRACTORY | Shell LRCC Plant | SHELL P.D (NEGERI SEMBILAN) | 1998 | LK |
| 75 | - Power Industry | TNB GENERATION | INSULATION | Shell LRCC Plant | SERDANG (SELANGOR) | 1998 | NSB |
| 74 | - Power Industry | YTL POWER STATION | CATHODIC PROTECTION | Provided Assistance to our Principal 'Corrosion Engineering Ingolf Falk' | PASIR GUDANG (JOHOR) | 1998 | NSB |
| 73 | - Power Industry | TNB GENERATION | REPAIRS | Boiler Manhole Modification (Assisted CMI-THAI) | CBPS, KLANG (SELANGOR) | 1998 | NSB |
| 72 | - Power Industry | TNB GENERATION | ALIGNMENT | Diverter Seal Replacement (Assisted CMI-THAI) | CBPS, KLANG (SELANGOR) | 1998 | NSB |
| 71 | - Power Industry | TNB GENERATION | EXPANSION JOINTS | Supply and Installation for -G.T.4 | SERDANG (SELANGOR) | 1998 | NSB |
| 70 | - Power Industry | TNB GENERATION | MECHANICAL | Boiler Tubes | PASIR GUDANG (JOHOR) | 1998 | NSB |
| 69 | - Power Industry | TNB GENERATION | INSULATION | Boiler Ducting | CBPS, KLANG (SELANGOR) | 1998 | NSB |



MMHE - Piping Insulation Work for Project FSRU (LNG LIBRA) (2009)



SUNBORN -Installation Insulation Of R/w & Armaflex On Decks , Stiffeners and Piping (2011)



PROJECT-Painting and Scaffolding work for HTM tank IDEMITSU PETROCHEMICALS (M) Pasir Gudang, Johor Bahru



PROJECT -New Machine House Acoustic Insulation Work at MOX LINDE(M) Pasir Gudang, Johor Bahru



PAINTING WORK - Renewal of fire brick preparation for HRC coating work.

OUR EXPERIENCES

| SN | Service Range | Client | Type of Work | Work Description | Location of Job | Year | Done By |
|----|--------------------------------------|-------------------------|------------------|--|-----------------------------|------|---------|
| 68 | - Power Industry | TNB GENERATION | REPAIRS | Boiler Tube (Wall & Economiser) replacement | PASIR GUDANG (JOHOR) | 1998 | NSB |
| 67 | - Power Industry | TNB GENERATION | VALVE OVERHOUL | Turbine's Valve maintenance works | PASIR GUDANG (JOHOR) | 1998 | NSB |
| 66 | - Power Industry | Apprewelth Engr. | INSULATION | Supply of Manpower | TUNGKU GAS PLANT | 1998 | LK |
| 65 | - Power Industry | TNB GENERATION - REMACO | PLANT OVERHOUL | Assisted in Major Overhaul of Boiler No.1 | PASIR GUDANG (JOHOR) | 1998 | NSB |
| 64 | - Power Industry | YTL Power Station | INSULATION | Maintenance Contract - Yearly Basis | PASIR GUDANG (JOHOR) | 1998 | NSB |
| 63 | - Power Industry | TNB GENERATION | INSULATION | For G.T.6A and 6B Duct & Stack | PASIR GUDANG (JOHOR) | 1998 | NSB |
| 62 | - Power Industry | TNB GENERATION | EXPANSION JOINTS | Supply & Installation for G.T.6A and 6B | PASIR GUDANG (JOHOR) | 1998 | NSB |
| 61 | -Wood-based, Textile, Paper & Others | CSR Sales (Malaysia) | INSULATION | Equipment & Gas Ductings | IPOH (PERAK) | 1998 | LK |
| 60 | -Wood-based, Textile, Paper & Others | Baneng Ind. | INSULATION | Piping | BATU PAHAT (JOHOR) | 1998 | LK |
| 59 | -Wood-based, Textile, Paper & Others | Malayan Newsprint Ind. | INSULATION | Equipment & Piping | MENTAKAB (PAHANG) | 1998 | NSB |
| 58 | -Oil, Gas & Petrochemical Industry | CSR Sales & Engr. E | INSULATION | Storage Tanks for MAP/LSWR Project | SHELL P.D (NEGERI SEMBILAN) | 1997 | LK |
| 57 | -Oil, Gas & Petrochemical Industry | Wilich (S) Pte. Ltd. | INSULATION | Hot Piping at PCS - II Plant | SINGAPORE | 1997 | LK |
| 56 | -Oil, Gas & Petrochemical Industry | TITAN GROUP | INSULATION | In House Contractors for TPC, TPE & TPP Plants | PASIR GUDANG (JOHOR) | 1997 | LK |
| 55 | -Oil, Gas & Petrochemical Industry | ASK Singapore | EXPANSION JOINTS | In House Contractors for Refinery Co. | SINGAPORE | 1997 | LK |
| 54 | -Oil, Gas & Petrochemical Industry | Apprewelth Engr. | INSULATION | Samsung CPC platform, White Tiger Field (Off -Shore) | VEITNAM | 1997 | LK |
| 53 | -Oil, Gas & Petrochemical Industry | ASK Singapore | REPAIRS | Petrochemical Plant at Pulau Seraya | SINGAPORE | 1997 | LK |
| 52 | - Power Industry | Genting Sanyen Power | INSULATION | Boiler & Associated Piping | K.LANGET (SELANGOR) | 1997 | LK |



IDEMITSU - TA2009 Fireproofing Work (2009)



MMHE - Piping Insulation Work for Project FSRU (LNG LIBRA) (2009)



SNC - Oto repair Insulation work (2011)



COLD INSULATION WORK - Removal & Renew of Cladding and Insulation at IDEMITSU SM tower, Pasir Gudang



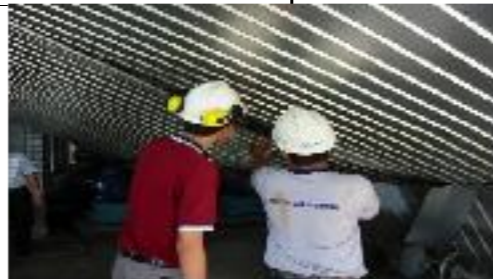
TITAN - Tunnel Pipe Wrapping For KSL Project Work (2009)

OUR EXPERIENCES

| SN | Service Range | Client | Type of Work | Work Description | Location of Job | Year | Done By |
|----|--------------------------------------|-----------------------|------------------|---|----------------------|------|---------|
| 51 | - Power Industry | TNB GENERATION | REPAIRS | Restoration of unit No.1 Primary Screens | PASIR GUDANG (JOHOR) | 1997 | NSB |
| 50 | - Power Industry | TNB GENERATION | REPLACEMENT | Portable Water Piping replaced with ABS Piping | PASIR GUDANG (JOHOR) | 1997 | NSB |
| 49 | - Power Industry | TNB GENERATION | INSULATION | Steam Piping | PASIR GUDANG (JOHOR) | 1997 | NSB |
| 48 | -Wood-based, Textile, Paper & Others | Magma Jaya | INSULATION | Nippon Sanso Corp , Nissan II- Air Separator Plant | SHAH ALAM (SELANGOR) | 1997 | LK |
| 47 | - Power Industry | YTL POWER STATION | MAINTENANCE | Mechanical Contract Works | PASIR GUDANG (JOHOR) | 1996 | NSB |
| 46 | - Power Industry | TNB GENERATION | EXPANSION JOINTS | Supply & Installation for ABB G.T.3A & 3B | PASIR GUDANG (JOHOR) | 1996 | NSB |
| 45 | - Power Industry | TNB GENERATION | REPLACEMENT | G.T.3A & 3B | PASIR GUDANG (JOHOR) | 1996 | NSB |
| 44 | - Power Industry | SEIMENS AG (M) | MAINTENANCE | For Warranty Works | PASIR GUDANG (JOHOR) | 1996 | NSB |
| 43 | -Wood-based, Textile, Paper & Others | Bumi-Hibiya | INSULATION | Komplek Perniagaan 'A', - Chiller & Acoustic Equip. | TAMPOI (JOHOR) | 1996 | LK |
| 42 | -Wood-based, Textile, Paper & Others | Ornasteel Entr. Corp. | INSULATION | Equipment for ARP (Reactor) | (MALACCA) | 1996 | LK |
| 41 | -Wood-based, Textile, Paper & Others | Malayan Oxygen | INSULATION | For CO2 Fleet at Perwaja Kemaman | KEMAMAN (TERENGGANU) | 1996 | LK |
| 40 | -Wood-based, Textile, Paper & Others | SPN Engineering | INSULATION | For CO2 Fleet at Perwaja Kemaman | JOHOR BAHRU (JOHOR) | 1996 | LK |
| 39 | -Wood-based, Textile, Paper & Others | HPC Engineering | INSULATION | Hitachi Chemical - Hot & Cold Piping | PASIR GUDANG (JOHOR) | 1996 | LK |
| 38 | -Wood-based, Textile, Paper & Others | Chip Heng Bricks Ind. | INSULATION | Ducting for Gelang Patah Plant | JOHOR BAHRU (JOHOR) | 1996 | LK |
| 37 | -Wood-based, Textile, Paper & Others | Mechmar Boiler | INSULATION | Boiler Shell | PASIR GUDANG (JOHOR) | 1996 | LK |
| 36 | -Wood-based, Textile, Paper & Others | Sri Takada Ind. | INSULATION | CCMC, PIX Plant - Piping | PASIR GUDANG (JOHOR) | 1996 | LK |
| 35 | -Wood-based, Textile, Paper & Others | Sri Hataya | INSULATION | TCM Plant - Equipment & Piping | TAMPOI (JOHOR) | 1996 | LK |



HOT INSULATION WORK -
Removal and Review of Cladding and Insulation at
HRSG ST 1A EESB



ALIGNMENT WORK-
Alignment seal of Diverter Damper at TNB
Generation of Klang



HOT INSULATION WORK -
Removal and Review of Cladding and Insulation
for Oil & Gas Plant



INSULATION WORK-
Repair of Expansion Joint



INSULATION WORK-
Removal, replace of insulation and cladding and
finished with wired mesh for personal protection
at YTL



OUR EXPERIENCES

| SN | Service Range | Client | Type of Work | Work Description | Location of Job | Year | Done By |
|----|--------------------------------------|----------------------------|------------------|--|----------------------|------|---------|
| 34 | -Oil, Gas & Petrochemical Industry | TITAN GROUP | REPLACEMENT | In House Contractor for TPC, TPE & TPP Plants | PASIR GUDANG (JOHOR) | 1996 | LK |
| 33 | -Oil, Gas & Petrochemical Industry | TITAN GROUP | INSULATION | Ethylene Piping | PASIR GUDANG (JOHOR) | 1996 | LK |
| 32 | -Oil, Gas & Petrochemical Industry | TITAN GROUP | MAINTENANCE | Plant Turnaround March '96 | PASIR GUDANG (JOHOR) | 1996 | LK |
| 31 | -Oil, Gas & Petrochemical Industry | Chiyoda (Malaysia) | EXPANSION JOINTS | For Equipment at PSR-2 | (MALACCA) | 1996 | LK |
| 30 | -Oil, Gas & Petrochemical Industry | P.T. Teknik | REPLACEMENT | For Equipment at PSR-2 | PASIR GUDANG (JOHOR) | 1995 | LK |
| 29 | -Oil, Gas & Petrochemical Industry | TITAN GROUP | MAINTENANCE | In House Contractor for TPC, TPE & TPP Plants | PASIR GUDANG (JOHOR) | 1995 | LK |
| 28 | -Wood-based, Textile, Paper & Others | Bison-Werke Bahre & Greten | INSULATION | MDF plant - Equipment & Piping | MENTAKAB (PAHANG) | 1995 | LK |
| 27 | -Wood-based, Textile, Paper & Others | Guan Chong Cocoa MDF | INSULATION | Equipment & Piping | PASIR GUDANG (JOHOR) | 1995 | LK |
| 26 | - Power Industry | DUECE BABCOCK (M) | INSULATION | G.T. combined cycle Power Station | PASIR GUDANG (JOHOR) | 1995 | LK |
| 25 | - Power Industry | TNB GENERATION | REPAIRS | Turbine & Boiler Valves | PASIR GUDANG (JOHOR) | 1995 | NSB |
| 24 | - Power Industry | TNB GENERATION | INSULATION | For Boiler Duct to Chimney & Boiler Walls | PASIR GUDANG (JOHOR) | 1995 | NSB |
| 23 | - Power Industry | TNB GENERATION | REFRACTORY | Pourable Castable for for Furnace peep holes & Boiler No 1. Furnace Hopper | PASIR GUDANG (JOHOR) | 1995 | NSB |
| 22 | - Power Industry | TNB GENERATION | INSULATION | Power Plant Rehabilitation / Conversion Project | PASIR GUDANG (JOHOR) | 1995 | NSB |
| 21 | -Oil, Gas & Petrochemical Industry | MEISEI INDUSTRES | INSULATION | Petrochemical Plant at PPM | KUANTAN (PAHANG) | 1994 | LK |
| 20 | -Oil, Gas & Petrochemical Industry | TITAN GROUP | REPAIRS | In House Contractor for TPC, TPE & TPP Plant | PASIR GUDANG (JOHOR) | 1994 | LK |
| 19 | -Oil, Gas & Petrochemical Industry | FOSTER THERMAL | INSULATION | Petronas Refinery | KERTIH (TERENGGANU) | 1994 | LK |
| 18 | -Oil, Gas & Petrochemical Industry | FOSTER THERMAL | INSULATION | Titan - TPE Plant | PASIR GUDANG (JOHOR) | 1994 | LK |



HOT INSULATION WORK -
Removal and Review of Cladding and Insulation for Oil & Gas Plant



Scaffolding Work-
Erection and Dismantle of Scaffolding Work for Benzene and Naptha Tank for KNM Group at Lotte Terminal 3



PAINTING WORK -
Painting and Labelling for BTX Plant of Titan Group at Pasir Gudang



INSULATION WORK -
Removal and Renew of Cladding and Insulation for YTL Cable Duct



PROJECT CUI -
Removal, replace of insulation and cladding and finished with industrial painting for the corroded equipment at Titan Group

OUR EXPERIENCES

| SN | Service Range | Client | Type of Work | Work Description | Location of Job | Year | Done By |
|----|--------------------------------------|----------------------|--------------|------------------------------------|----------------------|------|---------|
| 17 | -Oil, Gas & Petrochemical Industry | Daelim (Malaysia) | REFRACTORY | Titan TPC - Equipment & Piping | PASIR GUDANG (JOHOR) | 1994 | LK |
| 16 | - Power Industry | JURONG ENG. LTD. (S) | INSULATION | Gas Turbine | BRUNEI | 1994 | LK |
| 15 | -Wood-based, Textile, Paper & Others | GE (USA) M.A.C | INSULATION | Electronic Plant – Equip. & Piping | KOTA TINGGI (JOHOR) | 1994 | LK |
| 14 | -Oil, Gas & Petrochemical Industry | MEISEI INDUSTRES | REFRACTORY | Petrochemical Plant at SMDS | BINTUH (SARAWAK) | 1993 | LK |
| 13 | -Oil, Gas & Petrochemical Industry | Daelim (Malaysia) | INSULATION | Titan Petrochemical - NC 1 | PASIR GUDANG (JOHOR) | 1993 | NSB |
| 12 | -Oil, Gas & Petrochemical Industry | Wilich (Malaysia) | INSULATION | Titan Petrochemical - NC 2 | PASIR GUDANG (JOHOR) | 1993 | LK |
| 11 | -Wood-based, Textile, Paper & Others | Takuechi MDF | INSULATION | MDF Plant – Equipment & Piping | PASIR GUDANG (JOHOR) | 1993 | LK |
| 10 | -Wood-based, Textile, Paper & Others | MicoChip Board | INSULATION | MDF Plant – Equipment & Piping | KUANTAN (PAHANG) | 1993 | LK |
| 9 | -Wood-based, Textile, Paper & Others | Scan Dairy & Food | INSULATION | Equipment & Piping | PASIR GUDANG (JOHOR) | 1993 | LK |
| 8 | - Power Industry | ABB | INSULATION | 110MW Gas Turbine | PASIR GUDANG (JOHOR) | 1993 | LK |
| 7 | - Power Industry | ABB | INSULATION | 110MW Gas Turbine | PAKA (TERENGGANU) | 1993 | LK |
| 6 | - Power Industry | TNB GENERATION | INSULATION | Turbine Casing | PASIR GUDANG (JOHOR) | 1993 | NSB |
| 5 | -Wood-based, Textile, Paper & Others | Mechmar Boiler | INSULATION | Boiler Shell | PASIR GUDANG (JOHOR) | 1992 | LK |
| 4 | -Oil, Gas & Petrochemical Industry | FOSTER THERMAL | INSULATION | FCM Plant - Equipment & Piping | PRAI (PULAU PINANG) | 1992 | LK |
| 3 | -Oil, Gas & Petrochemical Industry | FOSTER THERMAL | INSULATION | Oil Rig Module at Sime Sembawang | PASIR GUDANG (JOHOR) | 1992 | LK |
| 2 | -Oil, Gas & Petrochemical Industry | Denkey | INSULATION | MSE- Ship & Module | PASIR GUDANG (JOHOR) | 1992 | LK |
| 1 | -Wood-based, Textile, Paper & Others | Mechmar Boiler | INSULATION | Boiler Shell | PASIR GUDANG (JOHOR) | 1990 | LK |



HOT INSULATION WORK -
Removal and Review of Cladding and Insulation at Oil & Gas Plant



INSULATION WORK -
Removal and Renew of Cladding and Insulation for



PROJECT SCAFFOLDING -
Erection and Dismatle of Scaffolding Hangging and Suspension Type for TPC 1 Lotte Chemical (M)



PROJECT CUI -
Removal, replace of insulation and cladding and finished with industrial painting for the corroded



PROJECT SCAFFOLDING-
Erection and Dismantle of Scaffolding at Height 84M at LafArge Cement at Pasir Gudang